

INDOFINE Chemical Company, Inc.

121 Stryker Lane, Bldg. 30, Suite 1 • Hillsborough, NJ 08844 • U.S.A.

Phone: (908) 359-6778 • FAX: (908) 359-1179

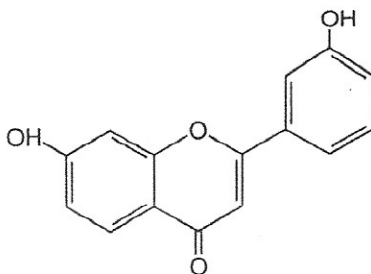
website: www.indofinechemical.com

e-mail: chemical@indofinechemical.com

CERTIFICATE OF ANALYSIS

Cat. No.: D-411

<u>Product:</u>	7,3'-DIHYDROXYFLAVONE
<u>Lot No.:</u>	0012277
<u>CAS No.:</u>	[108238-40-0]
<u>Molecular Formula:</u>	C ₁₅ H ₁₀ O ₄
<u>M.W.:</u>	254.25
<u>Melting Point:</u>	>270 °C
<u>Appearance:</u>	Off white powder
<u>Solubility:</u>	Soluble in DMSO
<u>TLC:</u>	Hexane:Ethyl Acetate (1:1)
<u>Purity(HPLC):</u>	97.75%
<u>Storage:</u>	Cool, dry place





INDOFINE Chemical Company, Inc.

121 Stryker Lane, Bldg. 30, Suite 1 • Hillsborough, NJ 08844 • U.S.A.

Phone: (908) 359-6778 • FAX: (908) 359-1179

website: www.indofinechemical.com

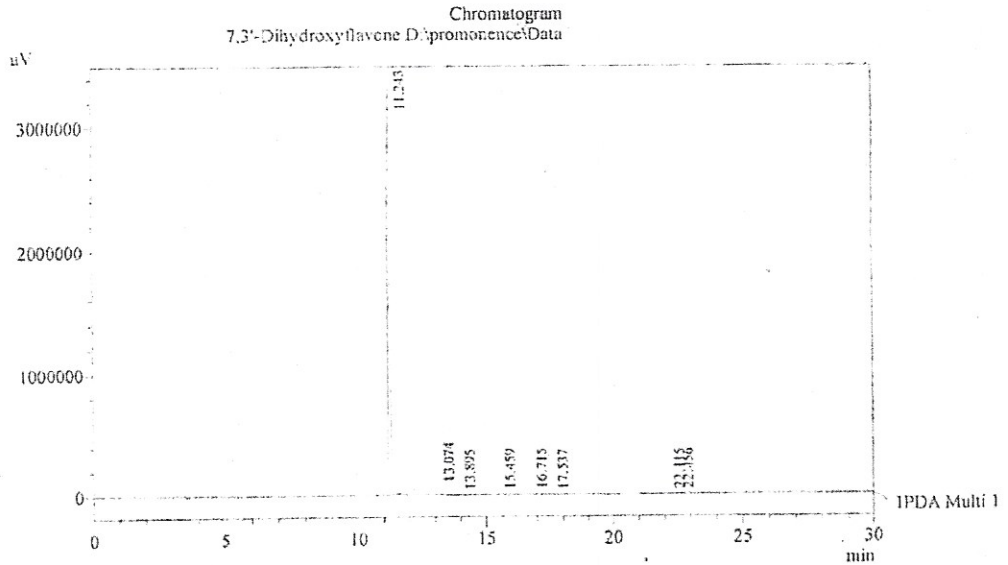
e-mail: chemical@indofinechemical.com

HPLC ANALYSIS

Acquired by : Sanjeev
 Sample Name : 7,3'-Dihydroxyflavone
 Sample ID : Lot No:-0012277
 Injection Volume : 20 uL
 Data Filename : 130212C.Jcd
 Method Filename : Linear Gradient.M.Jcm

Catalog No.: D-411
 Product name: 3',7-Dihydroxyflavone
 Lot No.: 0012277

Column : LUNA C-18(2), (250mm x4.6mm 5.0µ)
 Flow : 1.000 mL/min.
 Mobile Phase : A(0.05% TFA in water) B(Acetonitrile)
 0.01 90 10
 12.0 10 90
 20.0 10 90
 25.0 90 10
 30.0 90 10



1 PDA Multi 1 / 254nm 4nm

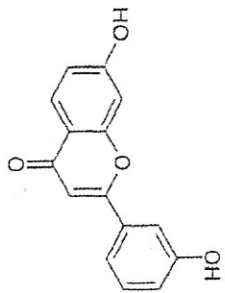
PeakTable

Peak#	Name	Ret. Time	Area	Area %	Relative Retention Time
1	RT:11.243	11.243	20504687	97.75	1.00
2	RT:13.074	13.074	408137	1.96	1.16
3	RT:13.895	13.895	14507	0.07	1.24
4	RT:15.459	15.459	12388	0.06	1.37
5	RT:16.715	16.715	11437	0.06	1.49
6	RT:17.537	17.537	3584	0.02	1.56
7	RT:22.115	22.115	7943	0.04	1.97
8	RT:22.456	22.456	10404	0.05	2.00
Total			20772887	100.00	



INDOFINE Chemical Company, Inc.
 121 STRYKER LANE
 BLDG. 30, SUITE 1
 HILLSBOROUGH, NJ 08844

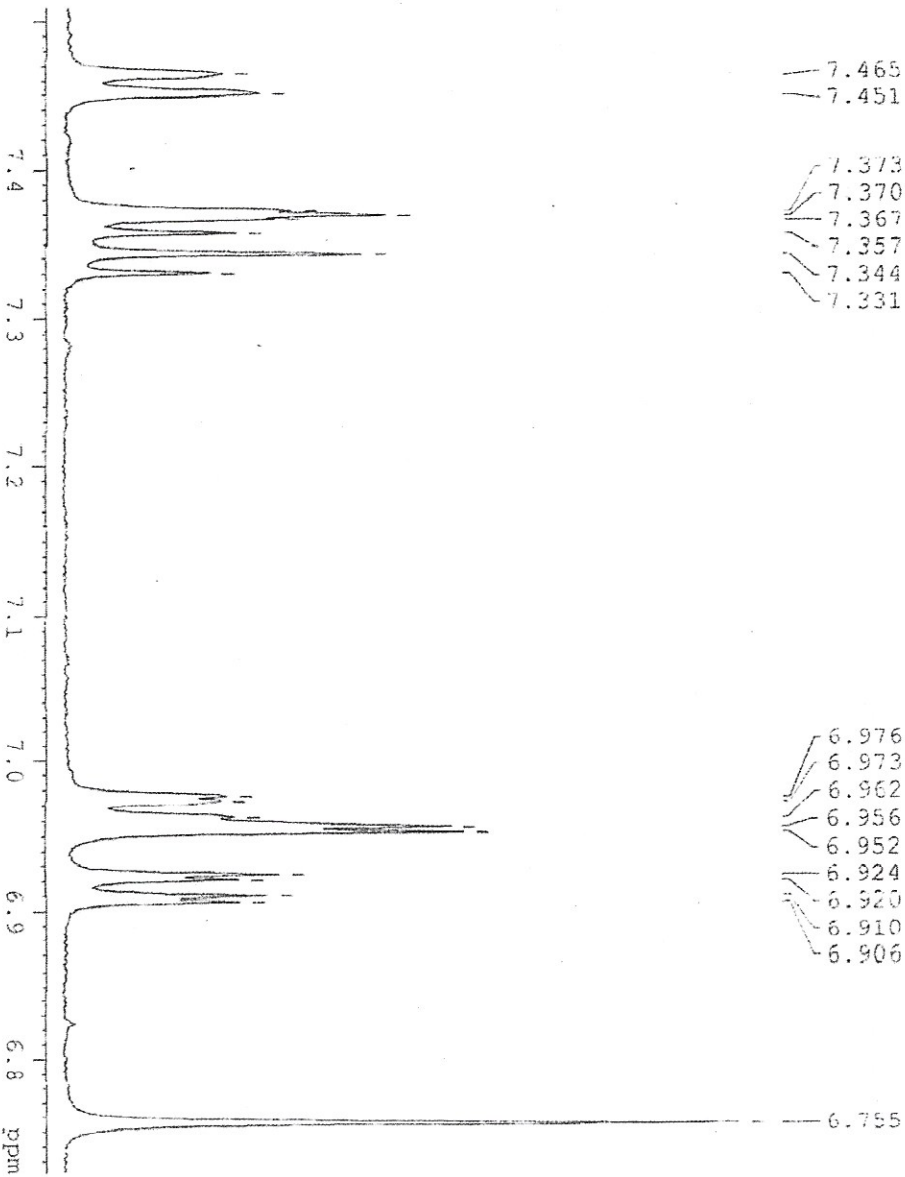
Catalog No.: D-411
 Product name: 3'-7-Dihydroxyflavone
 Lot No.: 0012277



¹H IN DMSO
 AVANCE-600

SOLVENT	DMSO
DS	32
SSR	4
SR	10312.196 Hz
RTX	2.132170 Hz
AD	1.1329245E-06
QZ	1.282E-06
EM	482.318 USEC
DE	6.100 USEC
TE	298.12 K
DI	1.89320000 SEC
TD	1

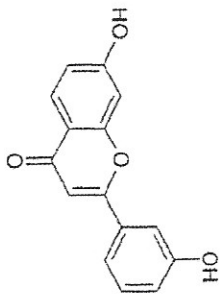
NAME	CH	IN
NAME	7.50	USEC
DE	7.60	DB
RTX	0.0038449E-06	
SFO	600.345247 MHz	
SI	107 Hz	
SE	600.3300115 MHz	
MEM	EM	
SN	3	
SN	0.30	Hz
SN	1	
TC	1.00	



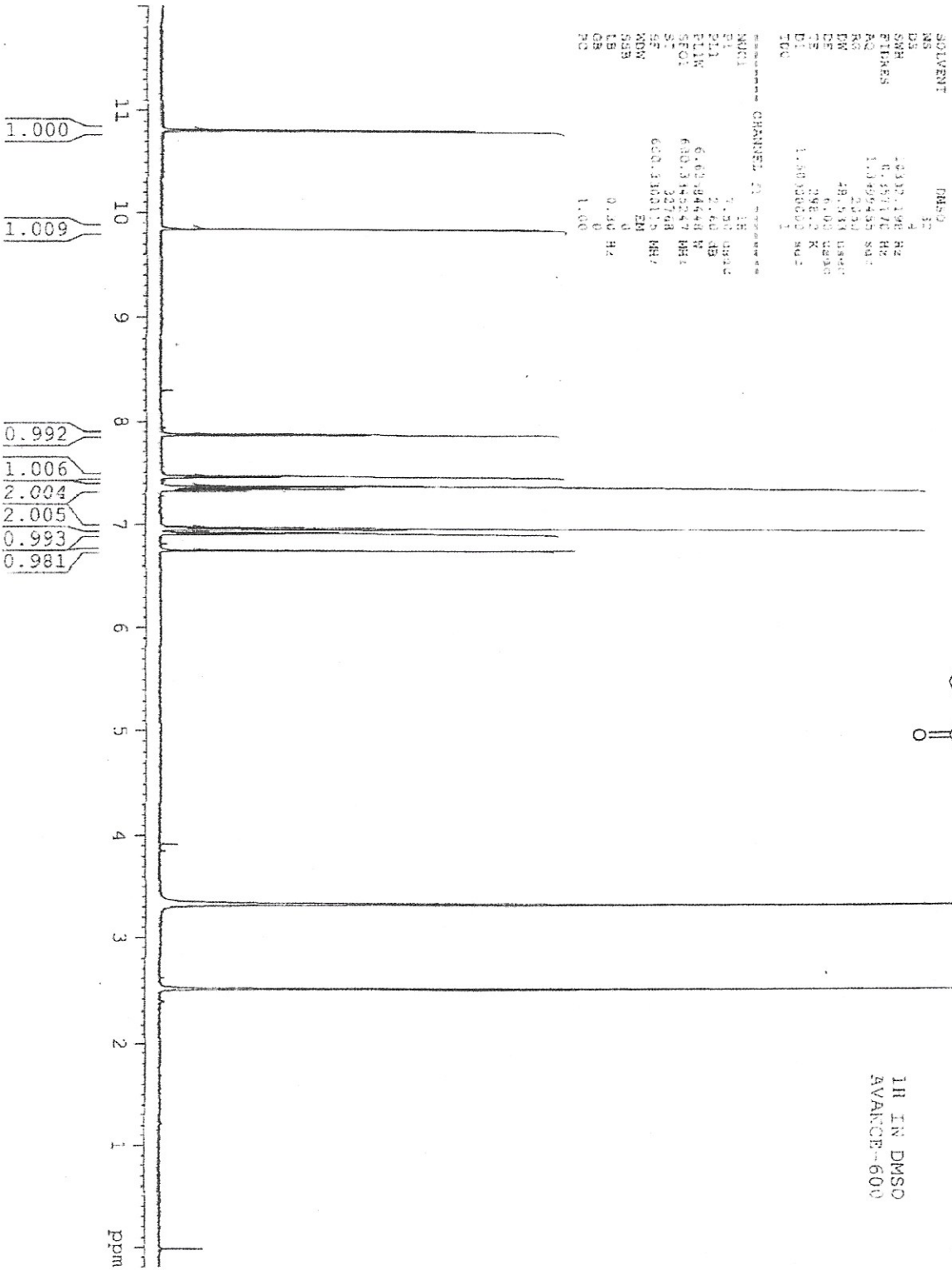


INDOFINE Chemical Company, Inc.
 121 STRYKER LANE
 BLDG. 30, SUITE 1
 HILLSBOROUGH, NJ 08844

Catalog No.: D-411
 Product name: 3,7-Dihydroxyflavone
 Lot No.: 0012277



1H IN DMSO
 AVANCE-600

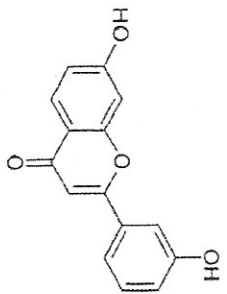


***** CHANNEL F1 *****
 NAME: 1H
 P1: 1.20
 P2: 2.40
 P3: 6.00
 P4: 6.00
 P5: 6.00
 P6: 6.00
 P7: 6.00
 P8: 6.00
 P9: 6.00
 P10: 6.00
 P11: 6.00
 P12: 6.00
 P13: 6.00
 P14: 6.00
 P15: 6.00
 P16: 6.00
 P17: 6.00
 P18: 6.00
 P19: 6.00
 P20: 6.00
 P21: 6.00
 P22: 6.00
 P23: 6.00
 P24: 6.00
 P25: 6.00
 P26: 6.00
 P27: 6.00
 P28: 6.00
 P29: 6.00
 P30: 6.00
 P31: 6.00
 P32: 6.00
 P33: 6.00
 P34: 6.00
 P35: 6.00
 P36: 6.00
 P37: 6.00
 P38: 6.00
 P39: 6.00
 P40: 6.00
 P41: 6.00
 P42: 6.00
 P43: 6.00
 P44: 6.00
 P45: 6.00
 P46: 6.00
 P47: 6.00
 P48: 6.00
 P49: 6.00
 P50: 6.00
 P51: 6.00
 P52: 6.00
 P53: 6.00
 P54: 6.00
 P55: 6.00
 P56: 6.00
 P57: 6.00
 P58: 6.00
 P59: 6.00
 P60: 6.00
 P61: 6.00
 P62: 6.00
 P63: 6.00
 P64: 6.00
 P65: 6.00
 P66: 6.00
 P67: 6.00
 P68: 6.00
 P69: 6.00
 P70: 6.00
 P71: 6.00
 P72: 6.00
 P73: 6.00
 P74: 6.00
 P75: 6.00
 P76: 6.00
 P77: 6.00
 P78: 6.00
 P79: 6.00
 P80: 6.00
 P81: 6.00
 P82: 6.00
 P83: 6.00
 P84: 6.00
 P85: 6.00
 P86: 6.00
 P87: 6.00
 P88: 6.00
 P89: 6.00
 P90: 6.00
 P91: 6.00
 P92: 6.00
 P93: 6.00
 P94: 6.00
 P95: 6.00
 P96: 6.00
 P97: 6.00
 P98: 6.00
 P99: 6.00
 P100: 6.00



INDOFINE Chemical Company, Inc.
 121 STRYKER LANE
 BLDG. 30, SUITE 1
 HILLSBOROUGH, NJ 08844

Catalog No.: D-411
 Product name: 3',7-Dihydroxyflavone
 Lot No.: 0012277



1H IN DMSO
 AVANCE-600

```

SOLVENT      DMSO
D1           3.7
SFR          -0.320149 Hz
F2          0.357175 Hz
AQ          1.3394452 sec
SFR         5850
F1          48.5012 4000
F2          50.012 8000
P1          2.2842 R
P2          1.50001008 sec
D1          1
===== CHANNEL #1 =====
NPRO1       1R
P1          1.00 3000
P2          1.00 45
SFR         0.00284444 Hz
SFR         600.1334197 MHz
SI          32
SQ          600.1301119 MHz
MFM        EM
SFR         0
SFR         0.30 Hz
SFR         0
SFR         1.30
  
```

